



CSIR  
INTEGRATED  
SKILL  
INITIATIVE

## CSIR-NCL SKILL DEVELOPMENT PROGRAM

# "Polymer Characterisation With GPC Techniques"



### FOR WHOM

- Students
- Academic Researchers
- Industrial Professionals

### HOW TO APPLY

Application form is available at -

<http://www.ncl-india.org/files/SDP/Default.aspx>

Here is the reason why  
**WHY CHOOSE US**



- More weightage on hands-on practice
- Interactive sessions
- Robust & sustainable training module
- Affordable fee structure
- Networking



<https://nclsdnp.ncl.res.in/>



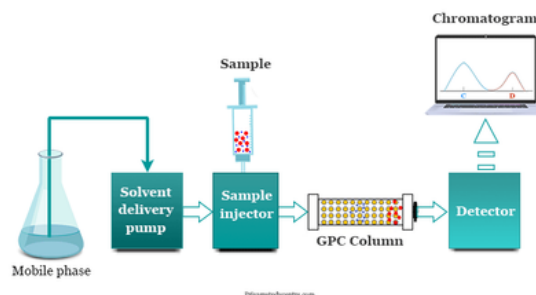
[ncl.sdtp@ncl.res.in](mailto:ncl.sdtp@ncl.res.in)



CSIR-National Chemical  
Laboratory, Dr. Homi  
Bhabha Road, Pashan,  
Pune-411008

<https://nclsdnp.ncl.res.in/>

### Gel Permeation Chromatography Instrumentation



### ABOUT COURSE

Gel permeation chromatography is used in a various industries like polymer, pharmaceutical, food, materials etc. It is the essential and important laboratory techniques used for material characterization. GPC is the most powerful method for determining average molecular weight and polydispersity of polymer samples. This course provides a detailed knowledge of theory, sample preparation, data generation, analysis, report preparation and trouble shooting w.r.t gel permeation chromatography. After successful completion of the course the candidate will be able to analyse and interpret the data and will acquire sufficient expertise.

### COURSE CONTENT

GPC - Introduction to GPC Technique, History and development, Pump, Column and detectors, Sample method development, live demonstration of sample run, Analysis and troubleshooting etc

### PRIME INSTRUCTOR & TEAM

Mrs. Poorvi Purohit

### COURSE DETAILS

**Duration-** 1 Week

**Dates-** 21st July to 25th July 2025

**No. of Seats-** 8

**Eligibility-** M. Sc., M. Pharm., B. E.,  
B. Tech., M. E., M. Tech

#### Course Fees -

Students - 3540 /-

Faculty - 11800 /-

Industrial Professional - 23600 /-

(The fees stated include 18% GST)  
Accommodation-1 week + 2 days with  
affordable charges

**Envalor**  
Imagine the Future

CSR Sponsor